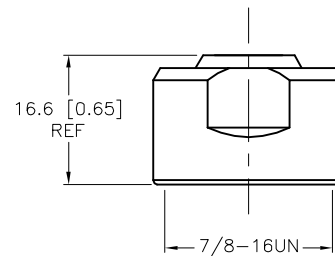
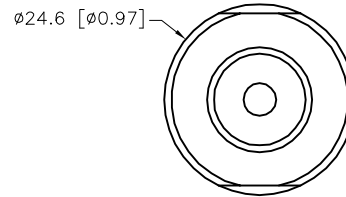


SPECIFICATIONS

CAP MATERIAL/FINISH	316 STAINLESS STEEL/PASSIVATED
GASKET MATERIAL	NITRILE



SOURCE DRAWING - FOR REFERENCE ONLY

RELATED DOCUMENTS 1. <b>NOTE</b> 2. <b>PRELIMINARY</b> 3. <b>SPECIFICATIONS</b> 4.		3RD ANGLE PROJECTION 	THIS DRAWING IS CONFIDENTIAL AND THE PROPERTY OF TURCK INC. USE OF THIS DOCUMENT WITHOUT WRITTEN PERMISSION IS PROHIBITED.	3000 CAMPUS DRIVE MINNEAPOLIS, MN 55441 1-800-544-7769 (763) 553-7300 (763) 553-0708 fax www.turck.us	
MATERIAL	SEE SPECIFICATIONS	ALL DIMENSIONS DISPLAYED ON THIS DRAWING ARE FOR REFERENCE ONLY	DRFT TR	DATE 04/28/23	DESCRIPTION RKMV-BC (10/BAG)
FINISH	SEE SPECIFICATIONS		APVD	SCALE 1=1.0	
		CONTACT TURCK FOR MORE INFORMATION	UNIT OF MEASUREMENT		IDENTIFICATION NO.
			<b>MILLIMETER [ INCH ]</b>		Z0045
		DO NOT SCALE THIS DRAWING		FILE: Z0045	REV A
				SHEET 1 OF 1	

A	DRAWING RELEASE	TR	04/28/23	500000008172
REV	DESCRIPTION	BY	DATE	ECO NO.